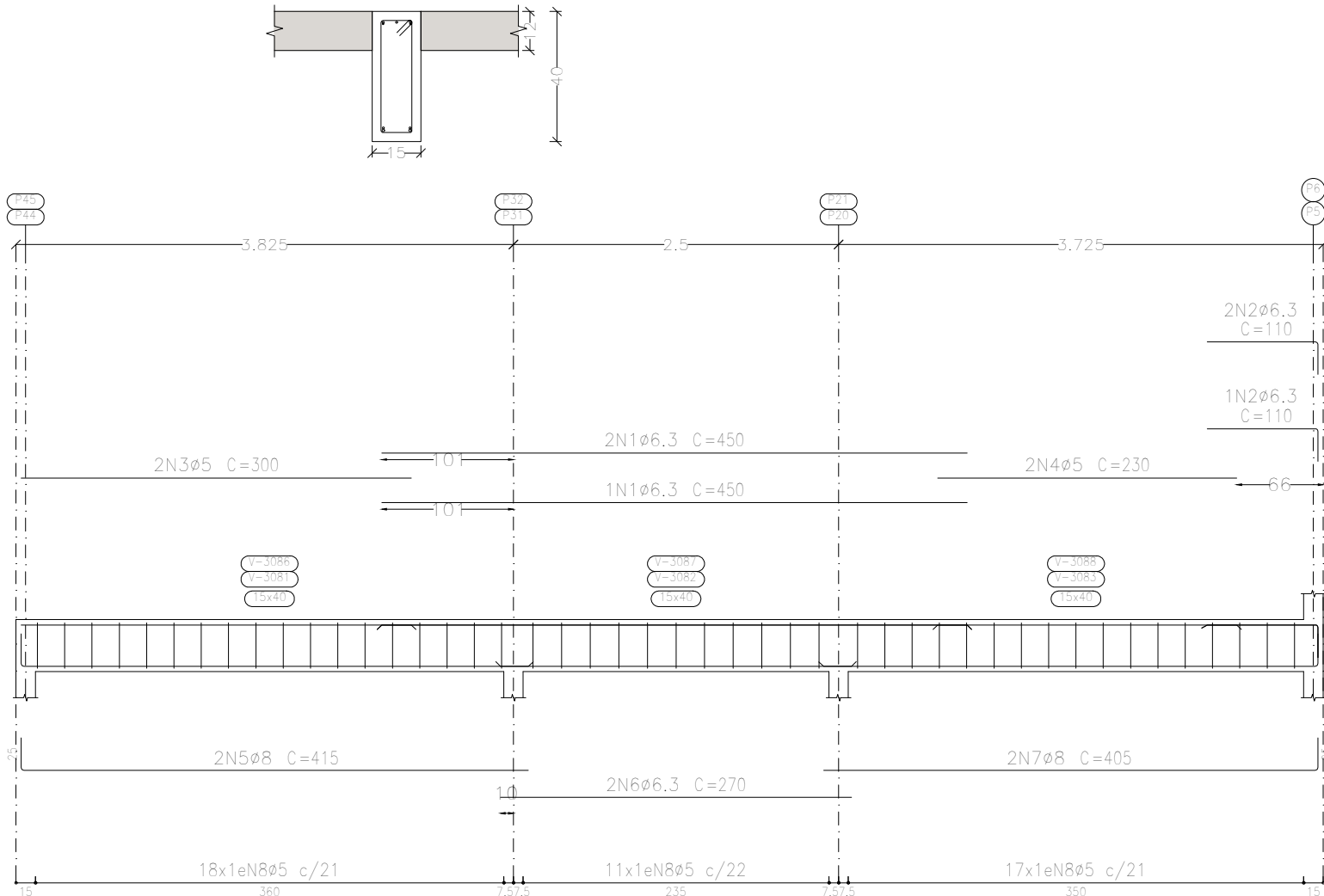
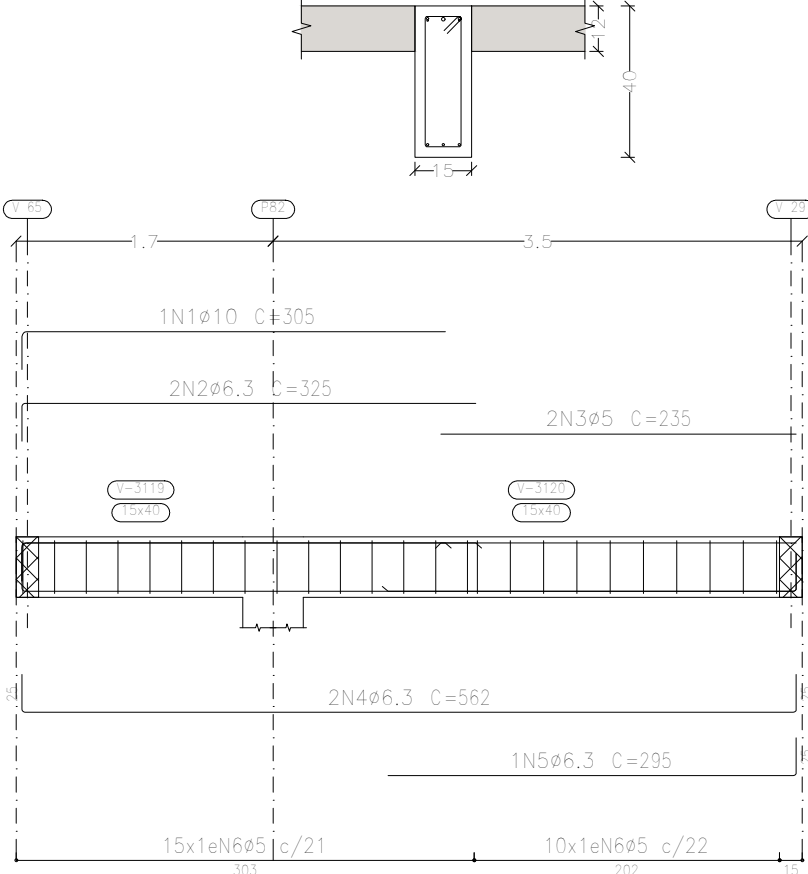


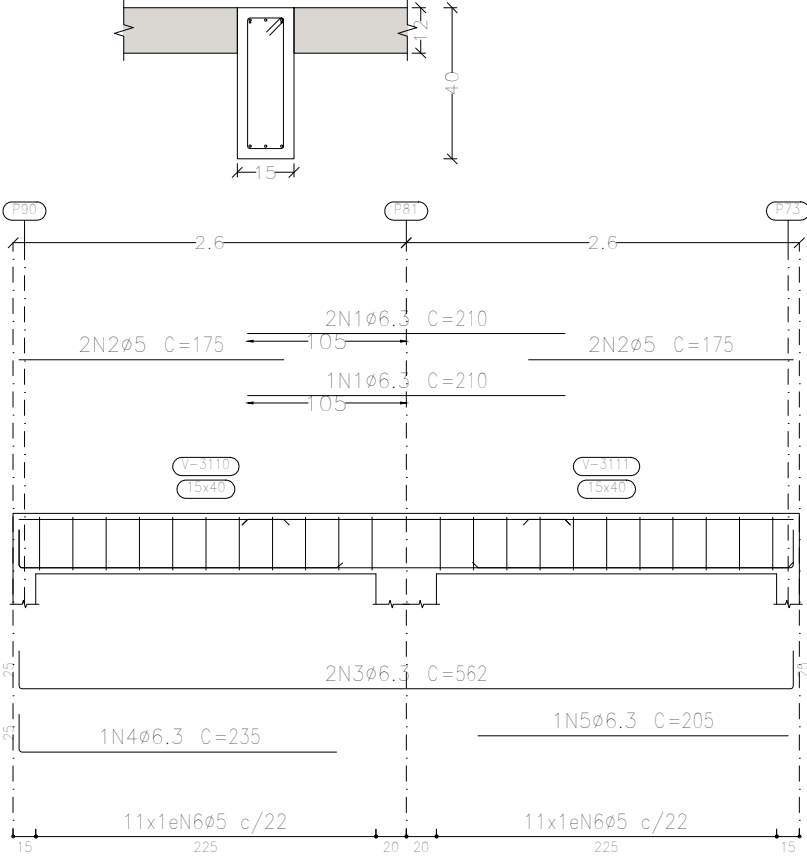
V 43
V 46



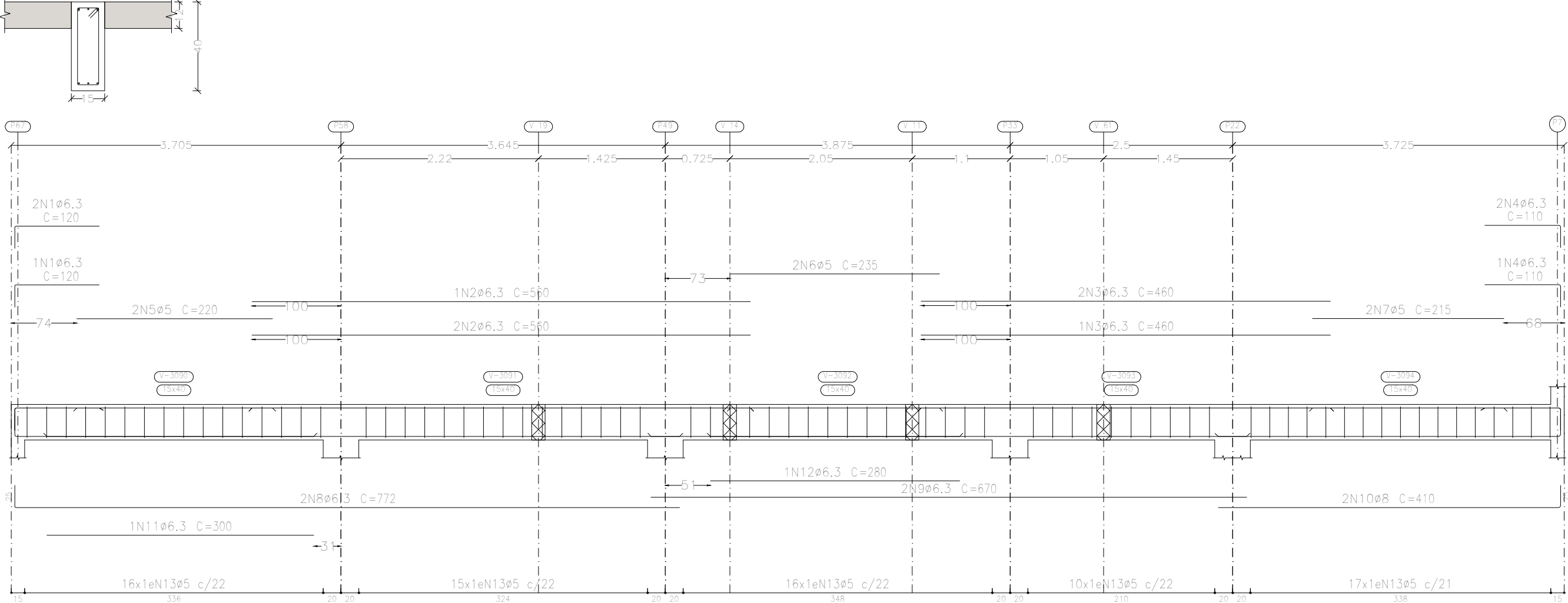
V 56



V 53

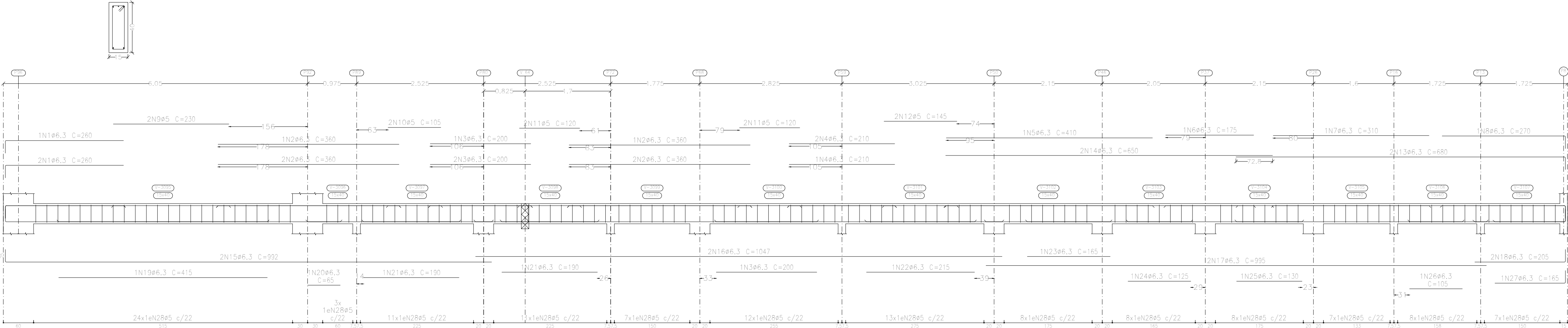


V 49



Piso 3
Desenho de vigas
Concreto: C25, em geral
Aço das barras: CA-50 e CA-60
Aço dos estribos: CA-50 e CA-60
Escala vigas 1:50
Escala seções 1:20
Escala aberturas 1:20

V 59



Elemento	Pos.	Diam.	Q.	Esquema (cm)	Comp. (cm)	Total (cm)	CA-50 (kg)	CA-60 (kg)
V 43+V 46	1	ø6.3	3		450	1350	3.3	
	2	ø6.3	3		110	330	0.8	
	3	ø5	2		300	600		0.9
	4	ø5	2		230	460		0.7
	5	ø8	2		415	830	3.3	
	6	ø6.3	2		270	540	1.3	
	7	ø8	2		405	810	3.2	
	8	ø5	46		98	4508		7.1
	Total+10% (x2)						13.1	9.6
							26.2	19.2
V 49	1	ø6.3	3		120	360	0.9	
	2	ø6.3	3		560	1680	4.1	
	3	ø6.3	3		460	1380	3.4	
	4	ø6.3	3		110	330	0.8	
	5	ø5	2		220	440		0.7
	6	ø5	2		235	470		0.7
	7	ø5	2		215	430		0.7
	8	ø6.3	2		772	1544	3.8	
	9	ø6.3	2		670	1340	3.3	
	10	ø8	2		410	820	3.2	
	11	ø6.3	1		300	300	0.7	
	12	ø6.3	1		280	280	0.7	
	13	ø5	74		98	7252		11.4
	Total+10% (x2)						23.0	14.9
V 55	1	ø10	1		305	305	1.9	
	2	ø6.3	2		325	650	1.6	
	3	ø5	2		235	470		0.7
	4	ø6.3	2		562	1124	2.8	
	5	ø6.3	1		295	295	0.7	
	6	ø5	25		98	2450		3.8
	Total+10% (x2)						7.7	5.0
V 53	1	ø6.3	3		210	630	1.5	
	2	ø5	4		175	700		1.1
	3	ø6.3	2		562	1124	2.8	
	4	ø6.3	1		235	235	0.6	
	5	ø6.3	1		205	205	0.5	
	6	ø5	22		98	2156		3.4
	Total+10% (x2)						5.9	5.0
V 59	1	ø6.3	3		260	780	1.9	
	2	ø6.3	6		360	2160	5.3	
	3	ø6.3	4		200	800	2.0	
	4	ø6.3	3		210	630	1.5	
	5	ø6.3	1		410	410	1.0	
	6	ø6.3	1		175	175	0.4	
	7	ø6.3	1		310	310	0.8	
	8	ø6.3	1		270	270	0.7	
	9	ø5	2		230	460		0.7
	10	ø5	2		105	210		0.3
	11	ø5	4		120	480		0.8
	12	ø5	2		145	290		0.5
	13	ø6.3	2		680	1360	3.3	
	14	ø6.3	2		650	1300	3.2	
	15	ø6.3	2		992	1984	4.9	
	16	ø6.3	2		1047	2094	5.1	
	17	ø6.3	2		995	1990	4.9	
	18	ø6.3	2		205	410	1.0	
	19	ø6.3	1		415	415	1.0	
	20	ø6.3	1		65	65	0.2	
	21	ø6.3	2		190	380	0.9	
	22	ø6.3	1		215	215	0.5	
	23	ø6.3	1		165	165	0.4	
	24	ø6.3	1		125	125	0.3	
	25	ø6.3	1		130	130	0.3	
	26	ø6.3	1		105	105	0.3	
	27	ø6.3	1		165	165	0.4	
	28	ø5	127		98	12446		19.5
	Total+10% (x2)						44.3	24.0
						ø5:	0.0	
						ø6.3:	87.1	
						ø8:	17.9	
						ø10:	2.1	
						Total:	107.1	
							68.1	

Complexo Municipal de Saúde	Data:	25/10/2023
Local:	Número de desenho:	
Avenida Júlio Campos, Quadra 03		
Complexo Municipal de Saúde	Escala:	Indicada
Eduardo Rampanelli Tosetto Engenheiro Civil Número de CREA: 1220503037	Data:	25/10/2023